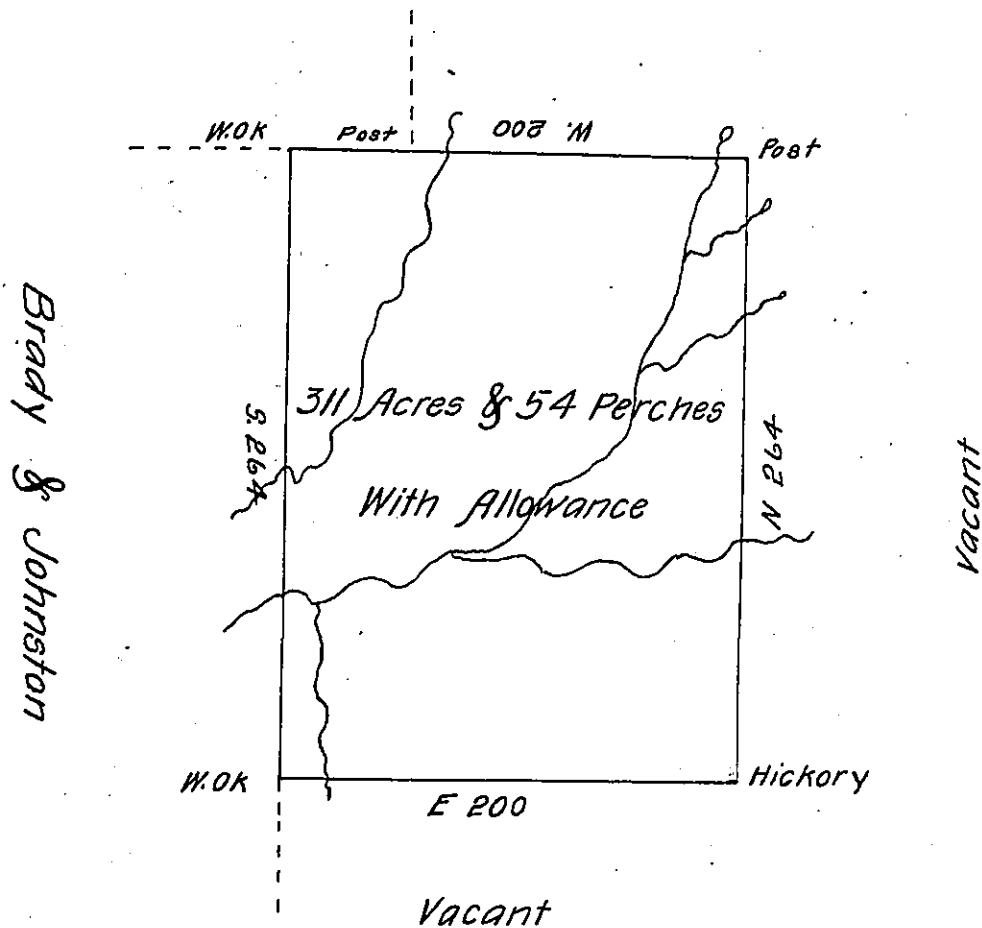


James Mc Clure



Surveyd to Joseph Carson the 20th day of July 1785 the above Described Tract of Land Containing Three Hundred & Eleven Acres and Fifty four Perches with the Allowance of Six P. Cent &c. Situate and lying on the head Waters of Cherry Run Adjoining Lands of Jas McClure and Brady & Johnston. In Northumberland County by Warrant of the 17th of May 1785. Number 227.

John Buchanan D. S.

John Lukens Esq^r Sur^v Gen^l

IN TESTIMONY that the above is a copy of the original remaining on file in the Department of Internal Affairs of Pennsylvania, made conformably to an Act of Assembly approved the 16th day of February, 1833, I have hereunto set my Hand and caused the Seal of said Department to be affixed at Harrisburg, this sixth day of July 1904.

Loose P. Brown
Secretary of Internal Affairs.